

# National Association of State Departments of Agriculture: *Together at The Table*

NC-FAR Presents:

ERS & NASS

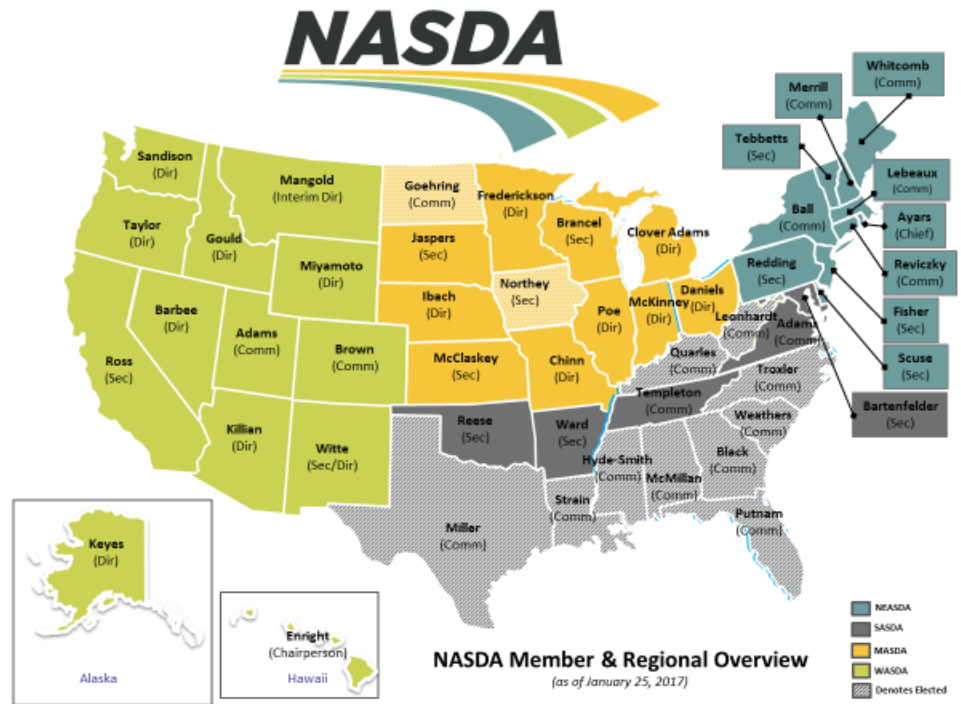
April 6, 2021

**NASDA**

The logo graphic for NASDA consists of three curved, overlapping bands that sweep from the left towards the right. The top band is yellow, the middle band is light green, and the bottom band is teal. The bands are separated by thin white lines and have a slight 3D effect.

# NASDA Mission

- NASDA grows and enhances American agriculture through policy partnerships, and public engagement.



# NASDA 2021 Policy Priorities

- Food Safety and Systems
- Climate Resiliency
- International Trade
- Workforce Development
- Infrastructure



# Agriculture is All About Data

- NASS and ERS are increasingly more important
- Agriculture relies on data
  - **Best available**
  - **Verifiable**
  - **Current**

Unbiased, credible, objective, statistical information



# ERS & NASS are Essential for U. S. Agriculture

- National, local, and global reporting
- Who relies on ERS & NASS data
  - Farmers and ranchers
  - Other USDA agencies, departments
  - Federal, state and local policymakers
  - Agribusiness
  - Ag traders
- Telling the Agriculture story relies on data
- Maintain producer trust and protect the privacy and data



# NASDA & NASS

- MOUs with State Departments of Agriculture
- Collection, analysis and publication of primary statistical data for the state
- Includes production, price, value, movement, stocks, processing and other use of crops, livestock and other agricultural commodities produced in the state



# NASDA & NASS

- Cooperative Agreement established in 1972, NASDA's longest standing agreement
- Employees over 2,500+ part-time enumerators who conduct NASS surveys and collect data.



# NASDA and ERS

- The Agricultural Resource Management Survey (ARMS)
- Jointly sponsored by ERS and NASS.
  - Primary source of information on the financial condition, production practices and costs, and resource use of the Nation's farms and ranches and their households.
- Used to evaluate the financial performance of farm/ranch businesses and to make policy decisions affecting agriculture and rural communities.
- USDA's annual estimates of net farm income





# Benefits of Relationships

- State Departments of Agriculture use ERS & NASS data in multiple different ways
  - Evaluate and propose policies & programs that help producers
  - Assess projections on commodity supply, demand, & prices
  - Monitor consumer trends and behaviors
  - Make well informed decisions on how to best serve farms and ranches
  - Determine how to allocate state resources



# 2021 Challenges and Opportunities

- New Administration
- Funding – federal and state
- Data is the future
- Discussions around climate resiliency, trade, equity.

**ERS & NASS More Important than Ever!**



# Questions?

**Dr. Barb Glenn, CEO**

[barb@nasda.org](mailto:barb@nasda.org)

(202) 296-9680

4350 N. Fairfax Drive

Arlington, VA 22203



Twitter: @NASDANews

Instagram: @NASDANews

[www.nasda.org](http://www.nasda.org)

